

Some Key Findings

"Opinions, Attitudes and Behavior toward the LGBT* population in Cambodia"

*LGBT= limited to Lesbian, Gay, Bisexual and Trans-genders community

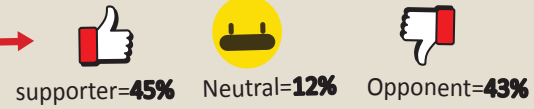
About the research

"Opinions, Attitudes and Behavior toward the LGBT population in Cambodia" is the first large scale research with the respondent of every group of LGBT community and general public. This study was done to fill the gap of information and evidence on LGBT experiences discrimination. The research was commissioned by Rainbow Community Kampuchea (RoCK) and carried out by professional research company ;TNS Cambodia, on May 2015 and was launched on December 2015.

Number of Respondents

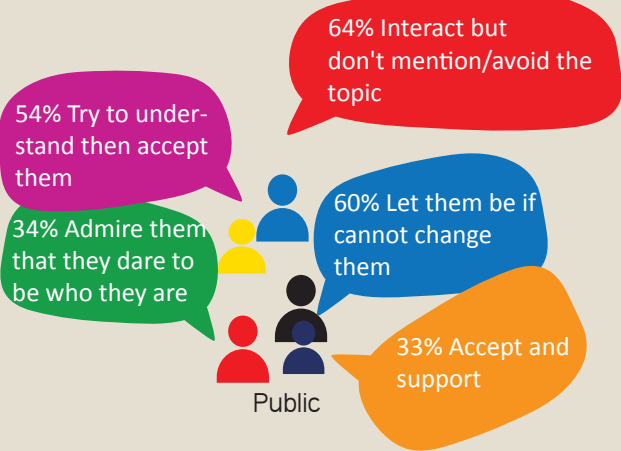


Does the general public support LGBT community?



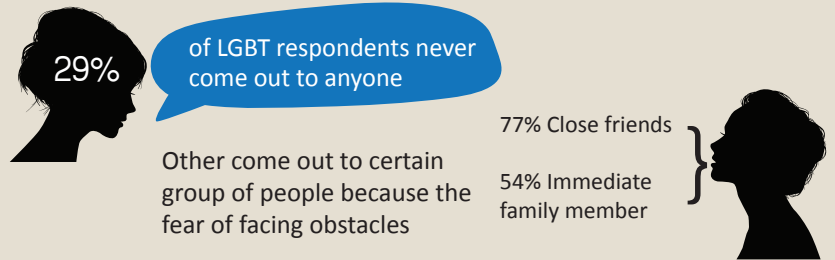
across **11** Provinces/cities

1 Top 5 reactions of genreal public toward LGBT:



3 On Coming out *

*Disclosure of one sexual orientation and/or gender identity



4 Khmer Terms for LGBT

of terms used to define LGBT in Khmer Language

up to **200!**

For example:

- PD
- Kteuy
- SIM PI (refer to bisexual)
- Phed TiBhei (Third Gender)
- Nek Srolanh Phed doch knea (same-sex lover)

2 What would you do if your child was LGBT?

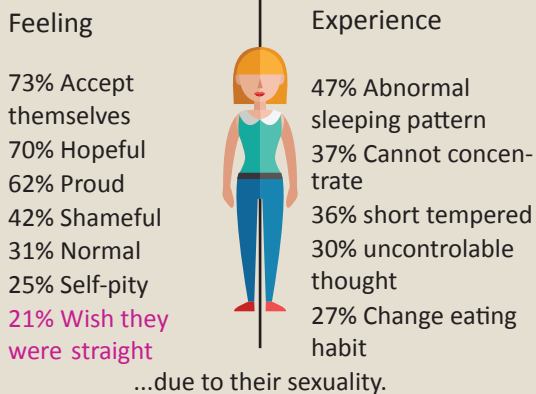
17% of opponent would force their LGBT children to married to straight partner



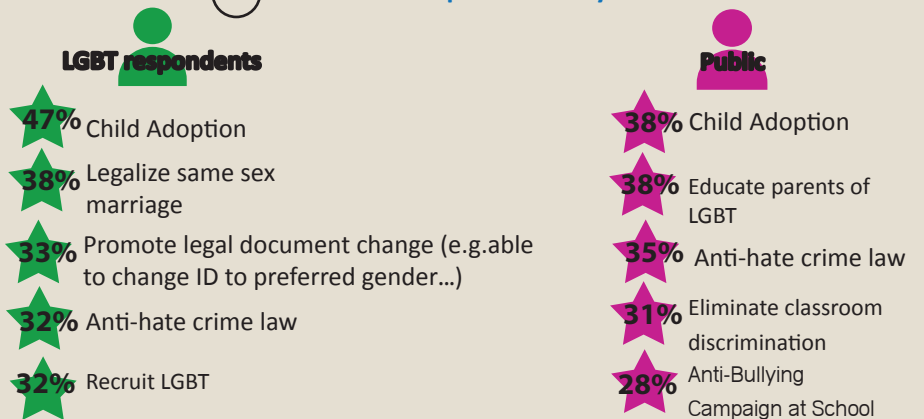
82% of LGBT preferred to be called by their name which indicate that they do not want to be labled.

My name is Pov and I want to be called Pov

5 Being LGBT, they have:



7 LGBT's need prioritized by



6 Top issue faced by LGBT community:

>80% of both straight and LGBT respondents think that **discrimination is the main issue** LGBT community face



Rainbow Community Kampuchea is a non-governmental organization working with LGBT community to promote LGBT human rights in Cambodia.

លេខទូរស័ព្ទ/ ☎ : +885(0)12 48 15 61
 អ៊ីម៉ែល/ ✉ : contact@rockcambodia.org
 គេហទំព័រ/ 🌐 : www.rockcambodia.org
 ហ្វេសប៊ុក/ 📱 : RoCKHMERLGBT2009

Link to full report:
<http://bit.ly/2jMGwhc>